

# 2016 CM Piano Preparatory Level Answer Key

Please read *Guidelines for Grading Theory Tests*

**Total Points: 80**

Points

Points

**1. Naming Notes** 9

(C) G B F D A G E F D

**2. Intervals** 8

(3rd) 5th 4th 3rd 2nd 5th 3rd 2nd 4th

**3. Names of Keys** 5

(G) D F B E A

**4. Half Steps and Whole Steps** 5

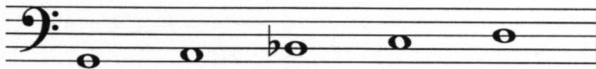
(Half) Whole Whole Half Whole Half

**5. Five-Finger Patterns** 5

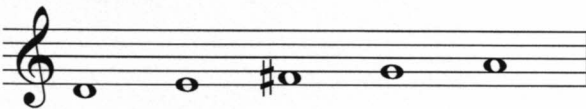
(C Major)  
d minor  
F Major  
G Major  
f minor  
c minor

**Five-Finger Patterns (add an accidental)**

**6. g minor** 1



**7. D Major** 1

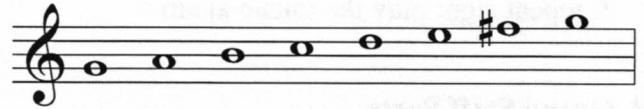


**8. Triads** 5

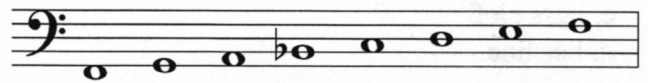
(C Maj) D Maj, f min, G Maj, c min, d min

**9. Major Scales (add an accidental)** 2

G Major



F Major



**10. Key Signatures** 3

F Major  
C Major  
G Major

**11. Rhythm - Names** 4

a. half rest                      c. eighth note  
b. whole note                    d. eighth rest

**12. Rhythm - Number of Beats** 4

a. 3 beats                      c. 2 beats  
b. 4 beats                      d. 2 beats

## 13. Terms

6

- a. slur: play *legato*
- b. symbols or terms that indicate loud or soft
- c. *fermata*: hold the note longer
- d. accent: play the note louder
- e. grand staff
- f. repeat sign: play the music again

## 14. Grand Staff Parts

4

- a. brace
- b. treble clef
- c. bass clef
- d. bar line

## Musical Analysis

13

- 15. G Major
- 16. F
- 17. 3
- 18. short, crisp
- 19. soft
- 20. it gets slower
- 21. return to the original speed
- 22. a. 5th      d. 4th
- b. 3rd     e. 2nd
- c. 3rd     f. 4th